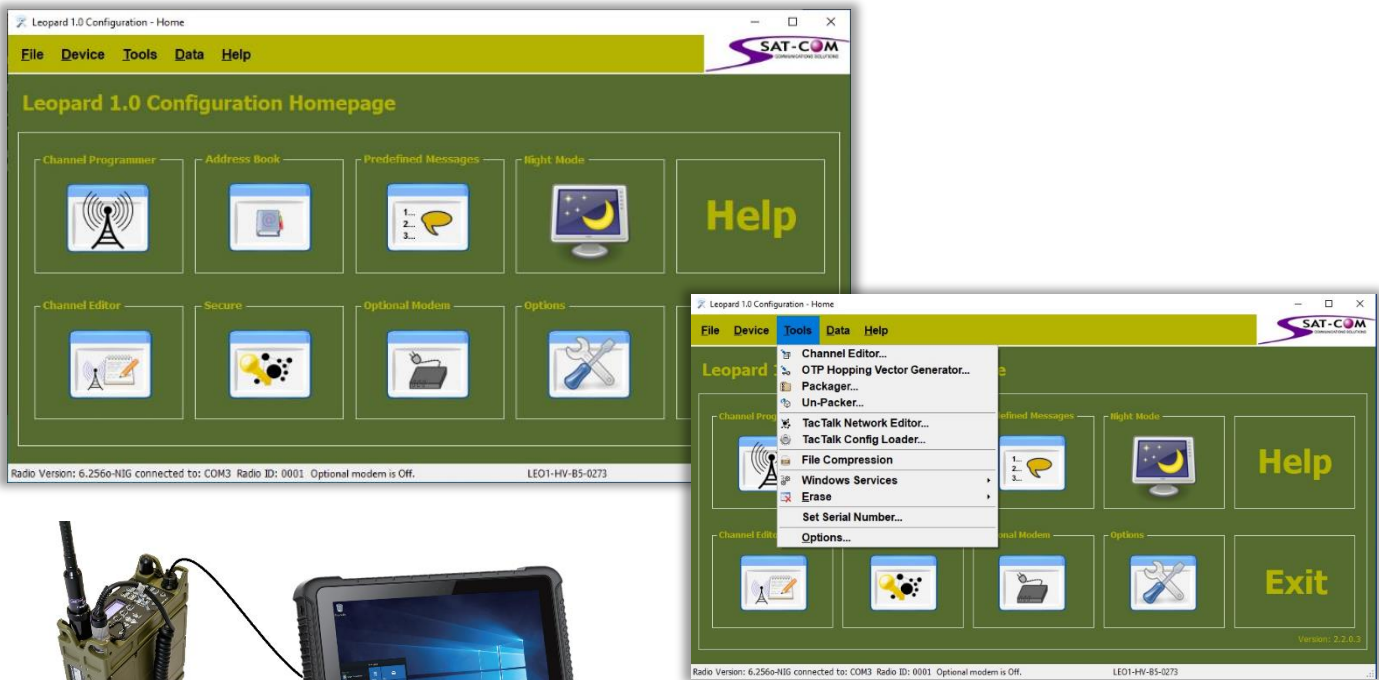


MISSION PLANNER Application



SKU: PCP-RAD-SW

The Sat-Com Mission Planner Application: Facilitating of Radio/Fill device Programming with complete Mission Plan (Profile) including Channels, Address Book, Pre-defined Messages, 3G-ALE Network, TacTalk, Hopping and Digital Encryption Keys



Mission Planner and Programmer in ONE Application!

FEATURES & BENEFITS OF MISSION PLANNER

- Complete Mission Planner in ONE
- Leopard1, Cheetah3, Badger1, Shark1 and Hawk1
- Fill Gun Programmer.
- End to End Mission Plan with Encryption for complete safety;
 1. CHANNELS: Frequencies, Modulation, Lock, 3G-ALE, Normal, Power, CTCSS, Ad-Hoc-Scan, Modem.
 2. ADDRESS BOOK: Call Signs
 3. PRE-DEFINED MESSAGES: Flash Messages
 4. 3G-ALE Network design.
 5. TacTalk Network Design.
 6. Encryption Key Generator for COMSEC and TRANSEC.
- Import and Export of partial or complete configuration.

ADVANCED NETWORK PLANNING

- A single Network Planning Tool which enables the network planning staff to plan and implement network plans which will ensure seamless communications across all forces.
- Help instructions for each feature and step built in for reference at any time.
- Secure connection between Mission Planning Tool and Radios to safeguard against any uncertified application connecting.
- Stable RS232 connection from Windows PC.
- Remote log in possible should assistance be required.
- Once OFF unlimited device and radio license for entire military Organisation.
- Ongoing support and upgrades of features.
- Automated steps where possible for uncomplicated procedure.



SECURE AND TACTICAL COMMUNICATIONS
www.sat.com.na

Tel: +264-61-374700
Fax: +264-61-251615
Email: sales@sat.com.na

2 Jakaranda Street
Suiderhof
Windhoek, Namibia



CONNECTION STATUS

The user is at all times informed about the connection status to the radio. Each organisation has its own secure connection to its radios ensuring no other user of operator can connect to the radios if it doesn't have the unique user parameters embedded in the Mission Planner connection procedure.

USER FRIENDLY

The Mission Planner is a step-by-step profiling application which enables the network planner to implement all the parameters required for the radios and either import separate, or combine in a packaged plan which is encrypted for distribution safety.

HELP FILES

Each section and step are clearly explained in the HELP files.

STEP BY STEP

Following the row of icons will lead the user to complete all the steps required to profile the radios in a secure command and control network.

DROP DOWN MENUS

All Steps can of Network Programming, export or import can be executed using the drop-down menus.

ICONS

All Steps of Network Programming can be executed using the icons.

CHANNEL PROGRAM

All parameters of the channels can be programmed step by step, or a copy paste option is Excel will ease tedious repetitive actions. Channel files are exportable / importable in Excel csv format.

ADDRESS BOOK

The address Book, also known as the Call Sign list can be created, exported or imported for later use.

PRE-DEFINED MESSAGES

Up to 20 Pre-Defined Messages of up to 120 characters can be copy pasted, typed, exported and imported for later use, including some auto fill options such as [ID], [GPS], {UTM} or {MGRS}.

ADVANCED MODEM

The ADVANCED Modem can provide the Digital Voice VOCODER with AES256 Encryption for Secure Digital Voice capabilities of 2400, 1200, 600 and even down to 300bps.

3G-ALE network also resides in the advanced modem and user can create, export, or import to edit the complete 3G-ALE Network in the Mission Planner Application.

SECURE KEYS

The Mission Planner Application includes the capability to create all the COMSEC and TRANSEC Keys.

For Hopping, the user can create the AES128 set of keys and the OTP (One-Time-Pin) keys and import into the radio.

For Data and Secure Digital Voice, the user can create the AES256 set of keys and import into the modem.

PACKAGER

For distribution, the packager can be used to combine all the required files to profile the radio in once single encrypted file for distribution vi USB thumb drive, Laptop/table/pc, Fill Device or e-mail across on the HF network for scheduled implementation.

FILL DEVICE

The Mission Planner Application can transfer the Mission Plan to either another radio, or a fill device (Scorpion) for distribution.

DATA NETWORK

Creation of TacTalk / TacTalk+ network for chat, voice, text, file transfer, e-mail, forms transfer as well as Situational Awareness operations.

MISSION PLANNING APPLICATION

NETWORK PLANNING CAPABILITY	RADIO CHANNELS: ✓ RADIO ADDRESS BOOK: ✓ PRE-DEFINED MESSAGES: ✓ 3G-ALE NETWORK: ✓ HOPPING KEYS: ✓ DATA & VOICE ENCRYPTION KEYS: ✓ TacTalk / TacTalk+: ✓	Name, Frequency, Modulation, CTSS, Scanning, Power Alphanumeric 10 characters Alphanumeric 120 characters with Auto Fill of {ID}, {GPS}, {UTM} or {MGRS}. Network ID, Frequencies, Scan Channels, Call Signs, Linking Preferences. OTP and AES128 create and Import. AES256 Create and Import. Network ID, Frequencies, Scan Channels, Call Signs, Linking Preferences.
PROGRAMMING	Sat-Com Radios: ✓ Fill Device: ✓	Leopard1, Cheetah3, Badger, Shark, Hawk Scorpion1
CONNECTION TO PROGRAM	Radios: Fill Device (Scorpion):	AUX Cable SKU# CBL-RAD-1SERD9 Cable Supplied with Scorpion Serial RS232 Baud 9600, 115200. USB-1, USB-2
OPERATING SYSTEMS	Windows 7, 8, 10 and 11 on 32 and 64-bit systems.	
MINIMUM SYSTEM REQUIREMENTS for PC/LAPTOP/TABLET	100 GB HDD/SDD Storage 8GB RAM Memory RS232 Native Port/ USB-RS232 Converter 10/100 Ethernet Port*	Touch screen or Normal Screen, Keyboard & Mouse 4:3 Aspect Ratio - Minimum 1024 x 768-pixel display 16:9 Aspect Ratio - Minimum 1280 x 720-pixel display
TRANSFER METHOD and LICENSING		
PC Devices to RADIOS	Via Serial RS232 / Ethernet TCP/IP (Optional)	
PC Devices to FILL DEVICE	Via Serial RS232	
LICENSE	Unlimited Use Once Off Lifetime License per each End User.	ORDER INFO: SKU# PCP-RAD-SW



SECURE AND TACTICAL **COMMUNICATIONS**
www.sat.com.na

Tel: +264-61-374700
 Fax: +264-61-251615
 Email: sales@sat.com.na

2 Jakaranda Street
 Suiderhof
 Windhoek, Namibia